



**stryker**<sup>®</sup>

---

**Medical**

# **Stryker Secure**<sup>®</sup> II Quick Start Guide

Always refer to the product label and/or operations manual before using any Stryker product.

## Overview

- A** Headboard
- B** Patient Controls
- C** Siderails
- D** Nurse Control Panel
- E** Footboard
- F** 120V AC Outlet (optional)
- G** Caster
- H** Siderail Release Handle
- I** Brake Pedal
- J** Siderail Controls
- K** Steer Pedal

Always refer to the package insert, product labeling and/or operations maintenance manuals before using any Stryker product.




## Ease of Use: Centrally Located Brakes

### To Activate

- 1 Press to set the brake.
- 2 Press again to release the brake.

### For Your Safety

There are LED lights on the outside of the head end siderails and on the foot end control panel that will blink when the brakes are not engaged.

 Always apply the caster brakes when a patient is getting on or off the bed. Push on the bed to ensure the brakes are securely locked. Always engage the brakes unless the bed is being moved. Injury could result if the bed moves while a patient is getting on or off the bed.

Always refer to the package insert, product labeling and/or operations maintenance manuals before using any Stryker product.



## Mobility: Steer Pedal Operation

### To Activate

Move the pedal located at the head end of the bed.

### For Your Safety

When the bed is moved, the steer caster helps guide the bed along a straight line and helps the bed pivot around corners.



Do not attempt to move the foot end of the bed laterally when the steer pedal is activated. When the steer pedal is activated, the steer caster at the foot end of the bed cannot swivel. Attempting to move the bed laterally when the steer pedal is activated may cause injury to the user.

Always refer to the package insert, product labeling and/or operations maintenance manuals before using any Stryker product.




## Fall Prevention: 110v Outlet (optional)

A 110v outlet is located under the footboard at the foot end of the bed. The 110v outlet has its own power cord that must be plugged in.

### For Your Safety

The outlet helps reduce the number of cords strung across the room, removing a potential trip hazard.

 Only use equipment with the following electrical specs: 110 VAC; 10A; 60Hz. Maximum total load drawn by equipment used in this receptacle outlet must not exceed 10A. The total system chassis risk current should not exceed 300uA. Grounding continuity should be checked periodically. To avoid risk of electric shock, unplug ALL power cords before opening the service compartment, junction box or receptacle. Do not use the optional 110V outlet for life sustaining equipment.

Always refer to the package insert, product labeling and/or operations maintenance manuals before using any Stryker product.



## Fall Prevention: Nightlight

Two night lights illuminate the floor area around the bed. The switch is under the litter thigh section on the patient's left side that turns both lights on and off.

### For Your Safety

Note: the night lights have a sensor so the lights will turn off, even when the switch is on, if the light in the room is bright enough so a night light is not necessary.

Always refer to the package insert, product labeling and/or operations maintenance manuals before using any Stryker product.



## Emergency CPR Release

When the bed fowler is raised and CPR is required, squeeze one of the two red release handles and the Fowler can be quickly guided down to a flat position.

### For Your Safety

Note: the handle can be released at any time to stop the fowler from lowering.

### CPR Board Usage (Optional Equipment)

If the bed is equipped with the optional CPR board, it is stored on the bed's headboard. To remove it, pull it away from the headboard and lift it out of storage position. If the CPR board option was not purchased, the headboard can also be removed and used as an emergency CPR board.

Always refer to the package insert, product labeling and/or operations maintenance manuals before using any Stryker product.



## Foley Bag Hooks

Foley bag hooks are found at two locations on both sides of the frame; under the frame below the seat section and at the foot end of the frame. The optional isolated Foley bag hooks are located at the foot end of the bed on top of the lift header.

## Ease of Use

The patient weight reading on the scale system will not be affected when the optional isolated Foley bag hooks are used.

Always refer to the package insert, product labeling and/or operations maintenance manuals before using any Stryker product.





## Ease of Use: Siderail Positions

To facilitate siderails down, press the yellow release button (do not press the yellow release button to raise).

Grasp the top of the rail, pull outward and swing it up to full height. When the siderail is raised it does not lock in the intermediate position.

To utilize the intermediate position, push in the yellow release handle and rotate the siderail until it locks in the intermediate position.

To fully lower the siderails, push the release handle again and rotate the siderail until it is completely lowered.



Be sure the siderail is locked securely into position. Siderails are not intended to keep patients from exiting the bed. They are designed to keep patients from inadvertently rolling off the bed. Proper restraint methods should be utilized to ensure the patient remains in the bed. The siderails are not intended to be used as a push device.

Always refer to the package insert, product labeling and/or operations maintenance manuals before using any Stryker product.

## BackSmart®: Intermediate Siderails

### BackSmart Seat Assist

- Intermediate position places patients' hips in the correct position on bed

### BackSmart Stand Assist

- Integrated lift system
- Gives patients two sturdy grip points to assist with egress

Always refer to the package insert, product labeling and/or operations maintenance manuals before using any Stryker product.



## Nurse Controls: Bed Motion

- 1 Push to lower head end/raise foot end of bed (Trendelenburg position).
- 2 Push to lower foot end/raise head end of bed (Reverse Trendelenburg position).
- 3 Push to raise bed height.
- 4 Push to lower bed height.
- 5 Push to raise Fowler.
- 6 Push to lower Fowler.
- 7 Push to raise Knee Gatch.
- 8 Push to lower Knee Gatch.



## Nurse Controls: Bed Motion Locks

- 1 Bed Motion Lock\***  
Locks all motion on bed, including siderail controls and foot end controls.
- 2 Fowler 30°+ Lock\***  
Raises the Fowler to 30° and locks out the Fowler control at all locations.
- 3 Patient Fowler Lock\***  
Locks out Fowler control at all locations, with the exception of the footboard operator controls.
- 4 Patient Gatch Lock\***  
Locks out Knee Gatch control at all locations, with the exception of the footboard controls.
- 5 Patient Bed Up/Down Lock\***  
Locks out Bed Height control at all locations, with the exception of the footboard operator controls.

\* Press and hold the lock button to unlock. Button and LED on dashboard will illuminate when activated.

**Note:** The Fowler will not go below 30° once the Fowler 30°+ lock is activated.



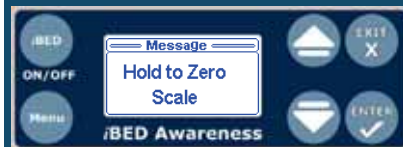
Always refer to the package insert, product labeling and/or operations maintenance manuals before using any Stryker product.


## Nurse Controls: Zeroing the Scale

Prior to weighing the patient:



1. Press and hold the **Zero** button.
2. **"Hold to Zero Scale"** message will appear briefly on the display as shown.
3. Immediately following, a **"Release Button"** message will flash on the display.
4. Release the **Zero** button.
5. After the **Zero** button has been released, **"Do Not Touch Bed"** message will flash on the display as shown.
6. When zeroing has been completed, **"Zeroing Successful"** message will be shown on the display. The Dashboard Bed Zero LED will illuminate. The display will show the status screen with the scale information as shown.
7. The bed is now ready for the patient.




 Scale function may be affected by sideral/caster interference. With the litter fully lowered or lowered in Reverse Trendelenburg, the siderals tucked under the litter in the storage position and the casters turned, there is the potential for interference between the sideral and the caster. Raise the siderals when lowering the litter to the full down position to prevent the interference from causing the scale system to weigh inaccurately.

Always refer to the package insert, product labeling and/or operations maintenance manuals before using any Stryker product.


## Nurse Controls: Weighing a Patient



1. Press and hold the  button.
2. "Release Button" message flashes on the display.
3. Release the **Scale** button.
4. After the **Scale** button has been released, "Do Not Touch Bed" message will flash on the display as shown.
5. When weighing has been completed, the patient's weight will be displayed on the status screen as shown. The patient weight displayed is stored in the system for later use.

**Note:** Pressing the scale button again within 60 seconds of the first press will remove the data from the screen.



 Do not zero bed scales or weigh patient with Percussion, Vibration, Rotation or Turn Assist active. Patient motion and position resulting from the dynamic therapy mattress may adversely affect scale system performance.

The power save mode is activated after one hour on battery power with no motion release switch activation. Functions including Bed Exit, Scale and Motion will cease to operate when the unit enters the power save mode. Injury to the patient could occur if proper patient monitoring protocol is not observed.

To avoid possible injury and to assure proper operation when using a powered mattress replacement system such as XPRT:

- Confirm proper scale system operation following mattress installation. For best results, secure the mattress power cord to prevent damage to the cord and interference with the bed frame and the scale system.

Always refer to the package insert, product labeling and/or operations maintenance manuals before using any Stryker product.

## Nurse Controls: Main Menu Features

### Change Scale Units (lb or kg)

The Change Scale Units feature allows the operator to select the unit of value (lb or kg) for the scale information that is presented on the display.

- 1 Press the **Menu** button.
- 2 Scroll down using the arrow buttons to Scale Units and press the **ENTER** button.
- 3 Select lbs or kg and press the **ENTER** button.

### To Change Equipment

This feature allows the operator to add or remove items from the bed without affecting the patient weight.

1. Select "**Change Equipment**" under menu then press and hold the **Enter** button.
2. When the display reads, "**Release to Start**" the system is ready to change equipment, and the display is as shown.
3. After completing the task, the screen will read, "**Equipment Changed**" and the Status Screen will now read the weight of the patient only.



## Fall Prevention: Chaperone® Bed Exit System

A three zone patented center of gravity system that tracks patient's body weight and alarms when 50% of the patient's body weight exits the perimeter.

### To Set Alarm

1. Before putting the patient on the bed, the system must be zeroed.
2. Push and release the **Arm/Disarm** button (top light will come on).
3. It will automatically select the first zone. To change the zone, push and hold the **Zone** button until the light indicating the desired zone comes on.

### To Disarm Alarm

1. To deactivate Bed Exit, push the **Arm/Disarm** button. The selected zone lights will turn off.

**Note:** If the bed was not zeroed at patient admission, prior to arming, the Chaperone Bed Exit System will not operate properly.



The Bed Exit System is intended only to aid in the detection of a patient exiting the bed. It is NOT intended to replace patient monitoring protocol. It signals when a patient is about to exit. Adding or subtracting objects from the bed after arming the bed exit system may cause a reduction in the sensitivity of the bed exit system. To avoid possible injury and to assure proper operation when using a powered mattress replacement system such as XPRT, do not initialize ("arm") bed exit with Percussion, Vibration, Rotation or Turn Assist active. The patient motion and position resulting from a dynamic therapy mattress may adversely affect bed exit system performance.

The power save mode is activated after one hour on battery power with no motion release switch activation. Functions including Bed Exit, Scale and Motion will cease to operate when the unit enters the power save mode. Injury to the patient could occur if proper patient monitoring protocol is not observed.

Always refer to the package insert, product labeling and/or operations maintenance manuals before using any Stryker product.

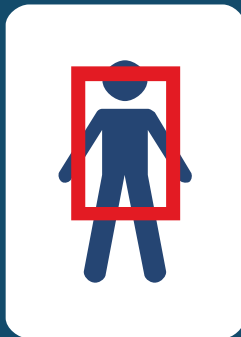


## Fall Prevention: Chaperone Bed Exit Alarm



### Zone 1 (default)

Allows the patient to move freely on the bed, but alarms when patient moves 50% of body weight out of the designated zone.



### Zone 2

Allows limited movement. Alarms when the patient approaches the siderail or foot end of the bed.



### Zone 3

Allows very minimal movement. Alarms when patient moves out of the tightly restricted zone.



## iBed® Awareness Functionality

- Monitors status conditions of the patient and produces an alert if the state had changed.
- When the system is turned on, it monitors each of the siderail positions and brake automatically.
- Can also be set to monitor Low Bed Height and Chaperone Bed Exit System.
- A light bar, located on the footboard, will illuminate and indicate the state of the iBed Awareness system. Lights located on each side of the bed, near the footboard will behave identical to the center light.

### Features

- When the iBed Awareness system is on, the light bar turns GREEN.
- If an alert state is triggered, the light bar will change to flashing AMBER. This indicates Indicates the bed has left the original configuration.
- The display screen on the footboard control will display the details of the alert state.



The iBed Awareness system is intended to serve as a secondary monitoring system, informing the operator via a visual or audible alert when a preset condition changes.

The optional iBed Awareness system only indicates the siderail position, it does NOT indicate if the siderail is locked. It is the caregiver's responsibility to ensure that the siderails are locked after every move and also before leaving a patient in the room.

The optional iBed Awareness system indicator lights are only an aid to the caregiver but in no way replace the caregiver's responsibility of checking on patients. Caregivers should not rely on the lights to perform their duties.

Before arming the optional iBed Awareness system, the nurse must physically verify that siderails are locked.

Always refer to the package insert, product labeling and/or operations maintenance manuals before using any Stryker product.

## iBed Awareness Monitoring and Alarms

### Low Height

If the low height state changes, the display will appear as shown, and the Low Height LED on the dashboard will blink.



### Brakes

If the brake is disengaged, the display will appear as shown, and the Brakes LED on the dashboard will blink.



### Siderails

If the siderail position state changes, the display will appear as shown, with the arrow pointing to the siderail position in alarm. The Siderail LED on the dashboard will blink as well.



### Bed Exit

If bed exit is disarmed, the display will appear as shown, and the Bed Exit LED on the dashboard will blink.



## iBed Awareness Monitoring and Alarms

### Fowler 30°+ Lock

- The Fowler 30°+ Lock is a dual purpose button. It positions the bed's fowler 30° to the horizontal and locks any Fowler motion below 30°.
- When the Fowler 30°+ button is pressed, the bed will reposition only if it is currently below 30°.
- Once the bed reaches its final position, display will read as shown.

### Additional Alarm Conditions

- If an audible alarm is desired, the caregiver can set the Awareness alarm to "On" through the Advanced Options Menu in the Main Menu.
- If the caregiver would like to set the Awareness alarm to the Nurse Call Station, the "Status To N/C" must be turned on through the Advanced Options Menu in the Main Menu.



Message  
Hold to  
Reposition & Lock



Message  
Locked



Message  
Repositioning



3800 E. Centre Ave.  
Portage, MI 49002 U.S.A.  
t: 269 329 2100 f: 269 329 2311  
toll free: 800 787 9537

[www.stryker.com](http://www.stryker.com)

The information presented in this brochure is intended to demonstrate a Stryker product. Always refer to the package insert, product label and/or operations manual before using any Stryker product. Products may not be available in all markets. Some features indicated in this Quick Start Guide are options and may not be configured on all products. Product availability is subject to the regulatory or medical practices that govern individual markets. Please contact your Stryker Account Manager if you have questions about the availability of Stryker products in your area.

Products referenced with <sup>™</sup> designation are trademarks of Stryker.  
Products referenced with <sup>®</sup> designation are registered trademarks of Stryker.

3002-029-001 Rev A

Copyright © 2010 Stryker  
Printed in USA

---

**Joint Replacements**

---

**Trauma, Extremities & Deformities**

---

**Craniomaxillofacial**

---

**Spine**

---

**Biologics**

---

**Surgical Products**

---

**Neuro & ENT**

---

**Interventional Pain**

---

**Navigation**

---

**Endoscopy**

---

**Communications**

---

**Imaging**

---

**Patient Care & Handling Equipment**

---

**EMS Equipment**