

# QUICK REFERENCE GUIDE

# GENDRON Bariatric Acute Care Bed-Model 5148/54PDX

This quick reference guide is not intended to be a substitute for the user manual. Read the entire user manual before using this device.

### Patient Pendant

Press and hold button to operate each function

- 1) Head Up ↑ and Down ↓
- 2) Bed Up ↑ and Down ↓
- 3) Knee Up ↑ and Down ↓
- 4) Chair Up ↑ and Chair Down ↓
- 5) Trendelenburg Up ↑ and Reverse Trendelenburg Down ↓
- 6) Under Bed Light On/Off



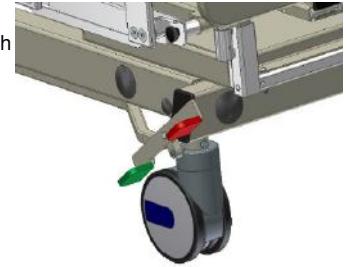
### Central Brake/Steer Function

Brake/Steer pedals are located at each corner of the bed.

**Neutral Position** – pedals level

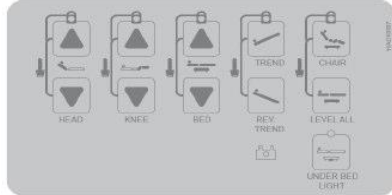
**Steer Position** – press down green Steer pedal

**Brake Position** – press down red Brake pedal



### Caregiver Controls

Caregiver controls are located at the foot end of the bed, on the side opposite of the rotating scale display.



### Lockout control

To lock/unlock a function from being used press and hold the up and down button of the button of the function to be locked/unlocked. A yellow LED is lit above the buttons of locked functions.

### Head/Knee/Bed/Tilt (trend/reverse trend)

Press and hold the button of the function desired (the UP or DOWN button).

### Cardio chair position

Press and hold the CHAIR button.

### Level All

Press and hold the LEVEL ALL button.

### Under bed light

Press the UNDER BED LIGHT button to turn the light on or off. A yellow LED is lit above the button when the light is on.

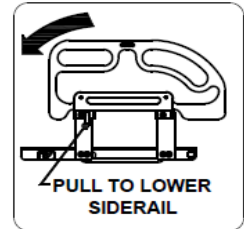
### Siderail Operation

Siderails are located on each side of the bed. Siderails have a 2-position swing down operation.

**To raise siderail**, grasp top section of rail and lift. Allow release pin to snap into the locked position.

**Caution:** Gently pull on the siderail to verify that it is latched in position.

**To lower siderail**, pull release lever and lower siderail.



### CPR Release

For emergency lowering of head section pull and hold the CPR release handle. The CPR release handle is located at the head end of the bed on both the left and right side.



**Caution:** Always allow head section to fully lower when using CPR release.

Note:

1. CPR release may not operate unless a patient is lying on the bed.
2. After activating CPR function it may be necessary to drive the actuator inward (head down) to reset the actuator before raising the head section.

### Side Extension

Using the deck extensions the bed width can be changed from 39" to 48" to 54". To adjust the side extensions pull the black knob that is at the end of each extension and move to the desired position.



**Caution:** Gently pull on the extension to verify that it is locked in position.

**Caution:** Ensure that all side extensions are adjusted to the same width. Equipment damage may occur during deck articulation.

**Caution:** Ensure that deck extensions are adjusted to properly fit the mattress. Improperly adjusted extensions may create dangerous gaps between the mattress and siderails.

### Foot Extension

Using the foot extension, the bed length can be adjusted from 84" to 92". To adjust the foot extension, pull the black knob that is at the center of the extension (below the footboard) and move to the desired position.

**Caution:** Gently push/pull on the extension to verify that it is locked in position.

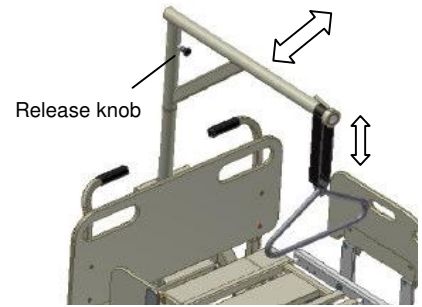
**Caution:** Ensure that the extension is adjusted properly to fit the mattress. An improperly adjusted extension may create a dangerous gap between the mattress and footboard.



This quick reference guide is not intended to be a substitute for the user manual. Read the entire user manual before using this device.

### **Patient Helper (optional)**

The patient helper is intended to help the patient raise his or her body. The patient helper handle may be raised or lowered by adjusting the strap. While the patient helper is not in use, the boom can be rotated 90 degrees in either direction and locked. To rotate the boom, pull the release knob and rotate to the desired position.



**Warning:** Do not allow the patient to use patient helper unless the boom is locked in the position shown to the right. Failure to do so may result in injury or equipment damage.

**Warning:** Gently push/pull on the patient helper boom to verify that it is locked in position.

**Warning:** Do not exceed the rated capacity of the patient helper (450 lbs). Patient injury or equipment damage may occur.

**Warning:** Do not use patient helper if strap is worn or frayed. Patient injury could occur.

**Warning:** Do not attempt to remove the patient helper boom while a patient is in the bed. Patient injury could occur.

### **Scale**

The scale can be used to monitor the patient's weight, change in weight and to alert the caregiver when the patient exits the bed.

**Menu** is used to edit system setup.

**Zero Weight** press and hold to change displayed weight to zero. **Do not press when patient is in the bed.**



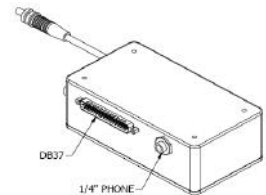
**Zero Weight Change** press and hold to change the displayed weight change to zero.

**Weigh** wakes the display. Also displays current weight/weight change data.

**Freeze** lets items be added or removed from the bed and not have an effect on the shown patient weight. Also, if a know error exists, lets the caregiver manually correct the shown patient weight. Press and hold to freeze.

**Up/Down** arrows. Use up arrow to change menu selection. Use down arrow to toggle value. When in Freeze mode, arrows can be used to make manual adjustments to the weight value.

**Bed Exit Alarm** press to enable or disable alarm. Use the menu button to program the alarm parameters. The facility nurse call can be activated by the bed exit alarm if desired by using either of the connectors at the head end of the bed.



#### **To edit system setup:**

- Press Menu
- Use Up arrow to change menu selection
- Use Down arrow to toggle value
- Press Freeze to save changes or
- Press Weigh to exit without saving changes

The parameters listed below can be changed through the Menu.

**Bed Exit Alarm** on 0-45% of patient weight in 5% increments. 5-15% high sensitivity, 20-30% medium sensitivity, 35-45% low sensitivity.

**Bed Exit Alarm** on time 30-300 seconds in 30 second increments. Alarm will sound for the amount of time desired between 30-300 seconds.

**Units** Kg or LB

**Backlight** intensity 0-10 in 1 unit increments

#### **To correct shown patient weight**

If the shown patient weight is known to be wrong press and hold the Freeze button, then use the Up and Down arrows to correct the shown weight. When adjustments are complete press the Freeze button to save changes and exit, or press the Weigh button to exit without saving changes.

